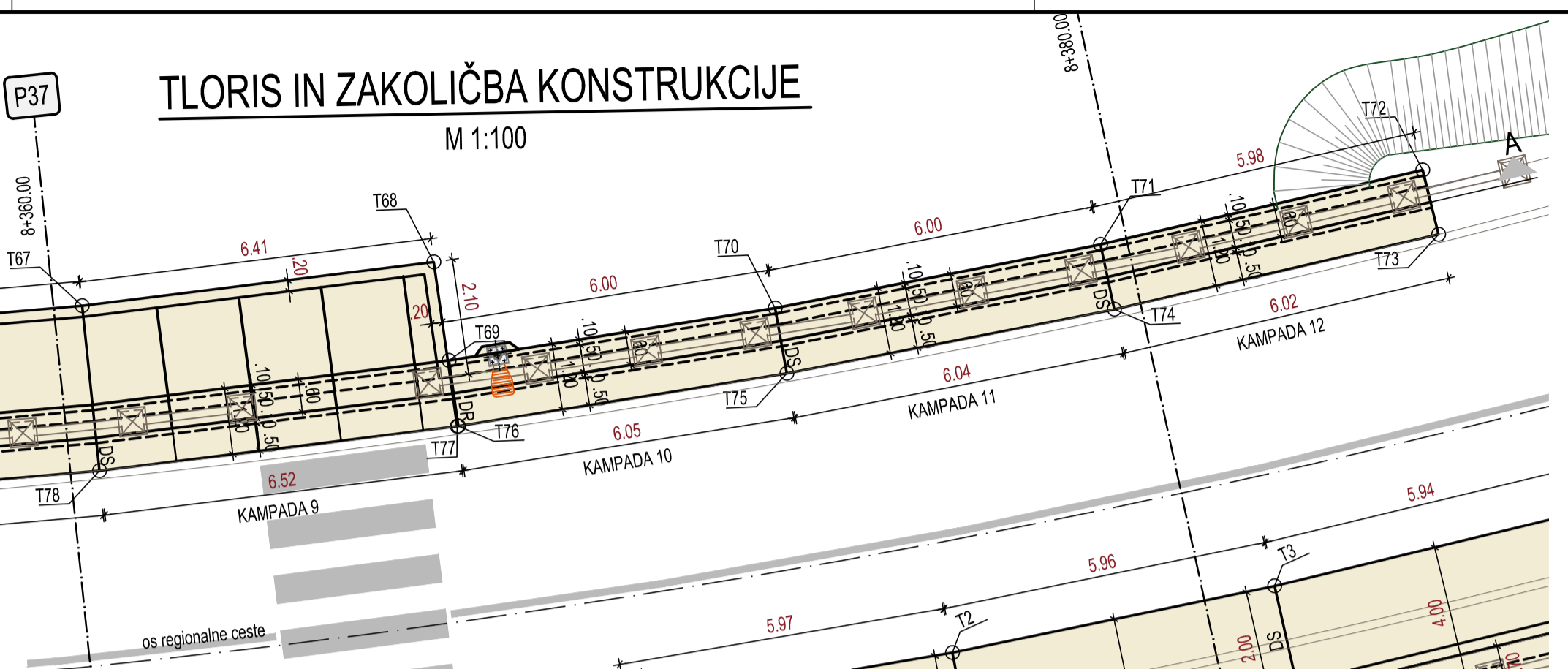
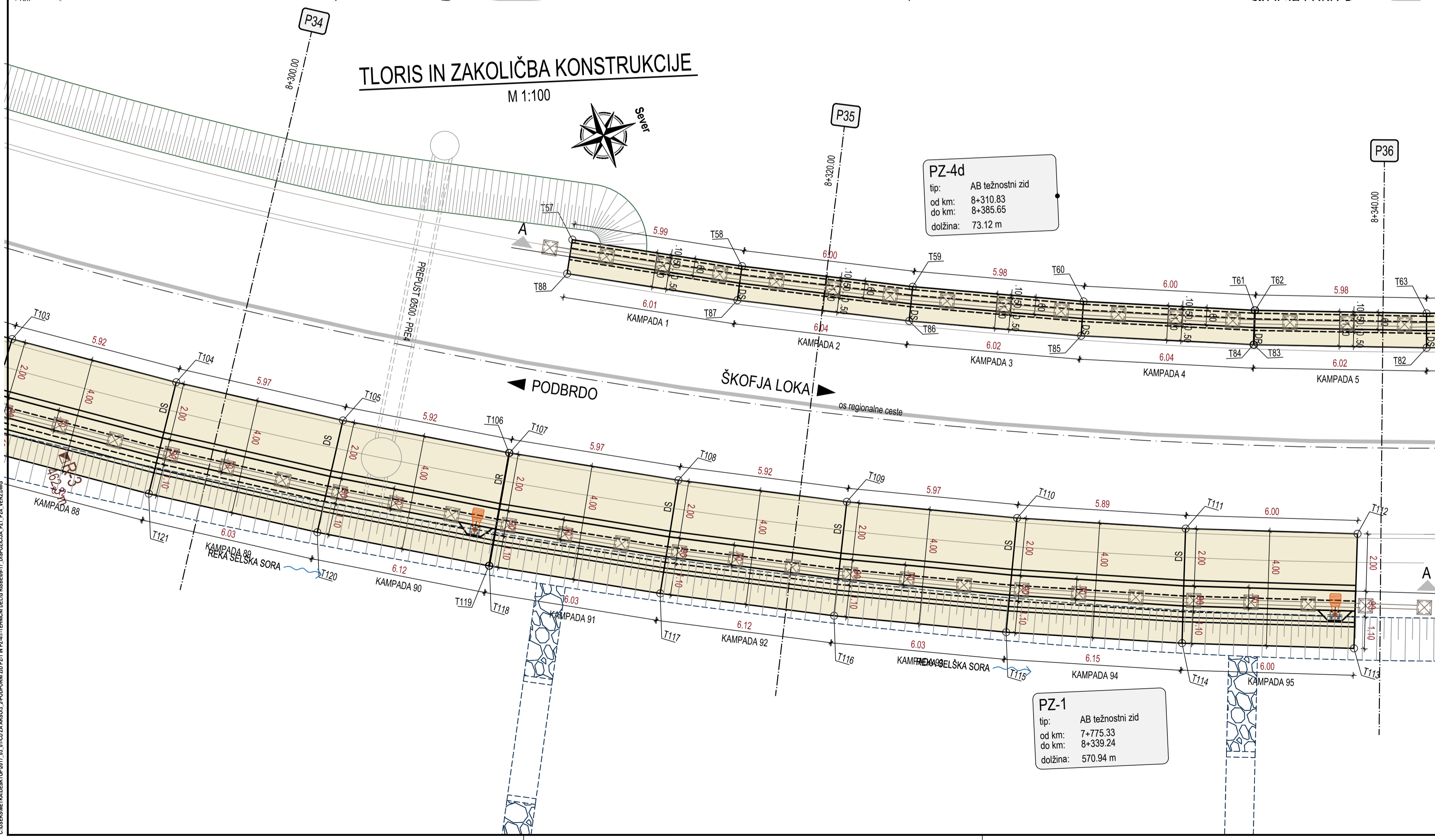


PZ-4d
 tip: AB težnostni zid
 od km: 8+310.83
 do km: 8+385.65
 dolžina: 73.12 m



PZ-1

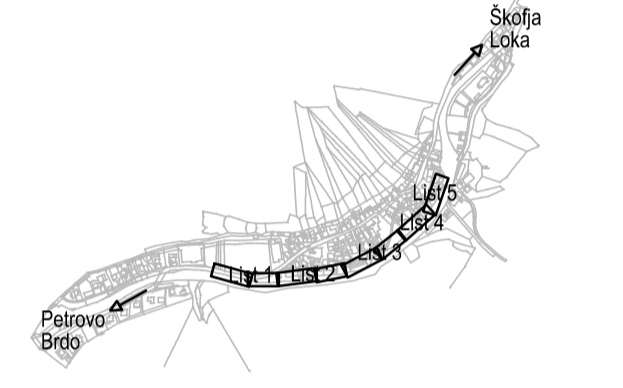
Točka	X	Y	Točka	X	Y	Točka	X	Y	Točka	X	Y
T1	119351.081	434587.415	T57	119353.459	434895.695	T113	119528.488	435085.570	T169	119348.478	434890.610
T2	119349.661	434593.256	T58	119354.842	434871.480	T114	119522.966	435083.219	T170	119348.474	434850.590
T3	119348.152	434599.103	T59	119356.381	434871.253	T115	119517.389	435080.627	T171	119347.319	434854.656
T4	119346.594	434604.904	T60	119358.072	434882.941	T116	119512.004	435077.907	T172	119346.266	434848.735
T5	119345.015	434610.698	T61	119359.942	434888.611	T117	119506.636	435074.973	T173	119345.285	434842.767
T6	119343.510	434616.717	T62	119361.956	434894.169	T118	119501.439	435071.910	T174	119344.369	434836.831
T7	119343.447	434616.507	T63	119361.963	434894.188	T119	119501.422	435071.900	T175	119343.489	434830.864
T8	119341.917	434622.313	T64	119364.161	434899.739	T120	119496.273	435068.634	T176	119342.634	434824.923
T9	119340.449	434628.122	T65	119366.506	434905.188	T121	119491.286	435065.240	T177	119342.631	434824.903
T10	119339.071	434633.928	T66	119369.025	434910.601	T122	119486.343	435061.635	T178	119341.793	434818.954
T11	119339.065	434633.947	T67	119371.679	434915.911	T123	119481.587	435057.924	T179	119340.971	434813.008
T12	119337.785	434639.793	T68	119374.489	434921.186	T124	119476.892	435054.009	T180	119340.164	434807.034
T13	119336.635	434645.651	T69	119374.499	434921.203	T125	119472.383	435050.007	T181	119339.377	434801.084
T14	119335.622	434651.547	T70	119377.412	434926.366	T126	119467.937	435045.841	T182	119338.603	434795.106
T15	119334.749	434657.450	T71	119380.467	434931.505	T127	119463.641	435041.624	T183	119337.851	434789.152
T16	119334.015	434663.387	T72	119383.617	434936.565	T128	119459.394	435037.287	T184	119337.048	434783.191
T17	119334.012	434663.407	T73	119386.873	434941.582	T129	119455.253	435032.926	T185	119337.111	434783.168
T18	119333.421	434669.324	T74	119390.196	434946.517	T130	119451.142	435028.492	T186	119336.392	434777.209
T19	119332.967	434675.289	T75	119393.625	434951.448	T131	119447.094	435024.053	T187	119335.688	434771.225
T20	119332.654	434681.248	T76	119397.825	434956.312	T132	119442.788	435019.558	T188	119335.002	434765.261
T21	119332.482	434687.228	T77	119397.105	434956.312	T133	119443.068	435019.558	T189	119334.332	434759.272
T22	119332.450	434693.175	T78	119400.646	434961.143	T134	119439.075	435015.060	T190	119333.680	434753.302
T23	119332.450	434693.195	T79	119404.234	434965.943	T135	119435.104	435010.505	T191	119333.678	434753.282
T24	119332.553	434699.178	T80	119407.860	434970.714	T136	119431.190	435005.947	T192	119333.044	434747.308
T25	119332.774	434705.150	T81	119407.872	434970.730	T137	119427.288	435001.334	T193	119332.427	434741.338
T26	119333.099	434711.129	T82	119411.524	434975.462	T138	119423.443	434996.718	T194	119331.825	434735.338
T27	119333.511	434717.104	T83	119415.220	434980.179	T139	119419.584	434992.175	T195	119331.247	434729.361
T28	119333.994	434723.076	T84	119418.955	434984.872	T140	119419.766	434991.921	T196	119330.707	434723.362
T29	119333.996	434723.096	T85	119422.717	434989.527	T141	119415.991	434987.249	T197	119330.705	434723.342
T30	119334.533	434729.053	T86	119426.513	434994.154	T142	119412.234	434982.528	T198	119329.804	434717.308
T31	119335.109	434735.018	T87	119426.526	434994.169	T143	119408.524	434977.795	T199	119329.477	434705.304
T32	119335.710	434741.003	T88	119430.352	434998.773	T144	119404.846	434973.029	T200	119329.253	434699.235
T33	119336.326	434746.969	T89	119434.235	435003.353	T145	119404.834	434973.013	T201	119329.150	434693.216
T34	119336.959	434752.928	T90	119438.139	435007.899	T146	119401.199	434968.230	T202	119329.150	434693.196
T35	119337.459	434758.895	T91	119442.080	435012.420	T147	119397.581	434963.389	T203	119329.183	434687.133
T36	119338.109	434764.854	T92	119446.051	435016.908	T148	119394.029	434958.542	T204	119329.357	434681.114
T37	119338.778	434770.831	T93	119450.046	435021.354	T149	119390.506	434953.617	T205	119329.676	434675.039
T38	119339.462	434776.784	T94	119454.060	435025.797	T150	119387.072	434948.681	T206	119330.134	434669.035
T39	119340.165	434782.759	T95	119458.098	435030.242	T151	119383.685	434943.664	T207	119330.737	434663.001
T40	119340.884	434788.710	T96	119462.284	435034.522	T152	119380.409	434938.602	T208	119331.479	434657.006
T41	119341.618	434794.659	T97	119466.472	435038.797	T153	119377.200	434933.446	T209	119332.269	434651.068
T42	119342.373	434800.629	T98	119470.739	435043.075	T154	119374.125	434928.272	T210	119333.109	434645.054
T43	119343.145	434806.591	T99	119475.080	435047.353	T155	119371.145	434922.990	T211	119334.001	434639.088
T44	119343.931	434812.533	T100	119479.546	435051.617	T156	119368.135	434917.713	T212	119334.948	434633.209
T45	119344.736	434818.493	T101	119484.099	435055.811	T157	119365.304	434912.425	T213	119335.955	434627.261
T46	119345.556	434824.431	T102	119488.804	435059.980	T158	119362.580	434907.125	T214	119337.020	434621.313
T47	119346.393	434830.367	T103	119493.590	435064.125	T159	119359.838	434901.818	T215	119338.152	434615.365
T48	119347.250	434836.303	T104	119498.423	435068.237	T160	119357.166	434896.511	T216	119339.327	434609.417
T49	119348.127	434842.240	T105	119503.297	435072.302	T161	119354.511	434891.204	T217	119340.559	434603.469
T50	119349.041	434848.178	T106	119508.226	435076.327	T162	119351.846	434885.897	T218	119341.826	434597.521
T51	119349.941	434854.116	T107	119513.165	435080.311	T163	119349.171	434880.590	T219	119343.101	434591.573
T52	119350.812	434860.054	T108	119518.104	435084.250	T164	119346.496	434875.283	T220	119344.376	434585.625
T53	119351.661	434865.993	T109	119523.043	435088.189	T165	119343.821	434869.976	T221	119345.651	434579.677
T54	119352.510	434871.932	T110	119527.982	435092.128	T166	119341.146	434864.669	T222	119346.926	434573.729
T55	119353.359	434877.871	T111	119532.921	435096.067	T167	119338.471	434859.362	T223	119348.201	434567.781
T56	119354.208	434883.810	T112	119537.860	435100.006	T168	119335.796	434854.055			



PZ-4d
 tip: AB težnostni zid
 od km: 8+310.83
 do km: 8+385.65
 dolžina: 73.12 m

PZ-1
 tip: AB težnostni zid
 od km: 7+775.33
 do km: 8+339.24
 dolžina: 570.94 m

TORIS IN ZAKOLIČBA KONSTRUKCIJE



KARAKTERISTIKE MATERIALOV PO SIST EN 206-1

ELEMENT	BETON	ARMATURA	ZAŠČITNI SLOJ
ROBNI VENEC	C30/37, PV-II, XC4, XD3, XF4 Dmax=22 mm, AB*	S500 B	4,5 cm
STENE ZIDOV	C25/30, PV-II, XD2, XF3 Dmax=32 mm, AB	S500 B	5,0 cm
TEMLJI	C25/30, PV-II, XC2, Dmax=32 mm, AB	S500 B	5,0 cm
PODLOŽNI BETON	C12/15, XC0, Dmax=16mm	NEARMIRAN	

Opomba: Zidove se gradi po principu bele kadi!
 Leseni del konstrukcije se izvedejo iz lesa C30 (po EC5), katerega je potrebno globinsko impregnirati s primernimi zaščitnimi sredstvi.
 Za izdelavo kovinskih delov konstrukcije se uporabi jeklo kvalitete S235JR ali jeklo "Corten".
 Pri uporabi jekla S235JR je potrebno elemente primerne protikorozivno zaščititi z vročim cinkanjem, skladno s standardom DIN ISO EN 12944.
 Debelina nanosa mora v povprečju znašati 85 µm. V primeru uporabe jekla "Corten" protikorozivna zaščita ni potrebna.

Št. spremembe:	Opis spremembe:	Datum:	Podpis:

PROJEKTANT: **GINEX International**

INVESTITOR: REPUBLIKA SLOVENIJA
 MINISTRSTVO ZA INFRASTRUKTURO
 DIREKCIJA REPUBLIKE SLOVENIJE
 ZA INFRASTRUKTURO

POZICIONALNE: NAZIV PROJEKTA: PRELOŽITEV REGIONALNE CESTE R2-403/1075
 PODROŠT - ČESNICA ŠKOJEZNIKNE
 OD KM 7+658 DO KM 8+999

NAZIV NAČRTA: **PODPORNİ ZID PZ-1 IN PZ-4**

OPIS RİSBE: **Torīs in zakoličba konstrukcije PZ-1 od kampade 88 - 95, PZ-4d List 5/5**

ŠT. PROJEKTA: 106-16C
ŠT. NAČRTA: 106-16C/3-2
VISTA NAČRTA: 3/2 Načrti gradbenih konstrukcij in drugi gradbeni načrti
SİRA OC: CC-SI 24205

VISTA PROJEKTA: PGD
DATUM PROJEKTA: september 2016 **DATUM RİSBE:** oktober 2016

ŠT. ODSEJA: 1075 **ARHİVSKA ŠT.:** 002/162 **FAZISILJEKT:** G.206
G.219

ŠT. PRİLOGE: 13 **AVTOR RİSBE:** GINEX International d.o.o.
IDENT. ŠT. RİSBE: 106-16C/3-2/13

Vse pravice pridržane. Pogojna dokumentacija je lastnopravna GINEX International d.o.o. in je tudi lastnopravna avtorja. Vse pravice odobrenja in dovoljenja uporabe ali razmnoževanja dokumentacije in vseh njenih delov in vsebin so drugi deli.